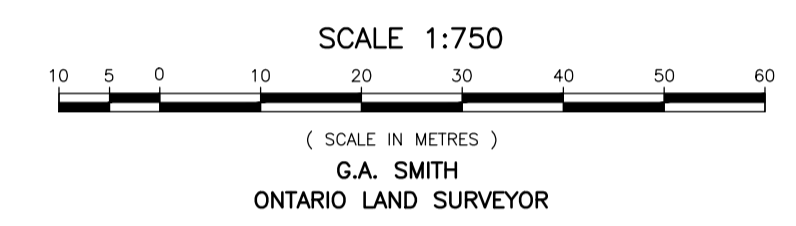


**PLAN**  
 I CERTIFY THAT THIS PLAN IS REGISTERED IN THE LAND REGISTRY OFFICE FOR THE LAND TITLES DIVISION OF LANARK (No. 27) AT \_\_\_\_\_ O'CLOCK ON THE \_\_\_\_\_ DAY OF \_\_\_\_\_ 20\_\_\_\_ AND ENTERED IN THE PARCEL REGISTER FOR PROPERTY IDENTIFIER NUMBERS 05094-0046(LT) AND 05094-0042(LT).

REPRESENTATIVE FOR  
 LAND REGISTRAR

SCHEDULE				
PART	LOTS	SECTION/PLAN	P.I.N.	AREA (M <sup>2</sup> )
1	1,2,3 & 4	McLEAN/6262	ALL OF 05094-0042(LT)	2352.39
2	16,17 & 18	McLEAN/6262	ALL OF 05094-0046(LT)	1581.98

**EXPROPRIATIONS ACT  
 EXPROPRIATION PLAN OF  
 LOTS 1,2,3,4,16,17 &18  
 McLEAN SECTION  
 PLAN 6262  
 MUNICIPALITY OF MISSISSIPPI MILLS  
 COUNTY OF LANARK**



**CERTIFICATE OF APPROVAL**

THE COUNCIL OF THE CORPORATION OF THE MUNICIPALITY OF MISSISSIPPI MILLS HEREBY CERTIFIES THAT APPROVAL WAS GIVEN TO THE CORPORATION OF THE MUNICIPALITY OF MISSISSIPPI MILLS ON THE \_\_\_\_\_ DAY OF \_\_\_\_\_ 20\_\_\_\_ TO EXPROPRIATE THE LANDS SHOWN AS PART 1 AND 2 ON THIS PLAN BY BY-LAW No. \_\_\_\_\_ OF THE CORPORATION OF MUNICIPALITY OF MISSISSIPPI MILLS PASSED ON THE \_\_\_\_\_ DAY OF \_\_\_\_\_, 20\_\_\_\_

DATED AT THE MUNICIPALITY OF MISSISSIPPI MILLS THIS 25 DAY OF January, 2021

*Christa Lowry*  
 CHRISTA LOWRY - MAYOR  
*Cynthia Moyle*  
 CYNTHIA MOYLE - ACTING CLERK  
 WE HAVE THE AUTHORITY TO BIND THE COUNCIL OF THE CORPORATION OF THE MUNICIPALITY OF MISSISSIPPI MILLS

**EXPROPRIATION CERTIFICATE**

THE LAND SHOWN AS PART 1 AND PART 2 ON THIS PLAN IS HEREBY EXPROPRIATED IN FEE SIMPLE AND VESTS IN THE CORPORATION OF THE MUNICIPALITY OF MISSISSIPPI MILLS PURSUANT TO THE PROVISIONS OF THE MUNICIPAL ACT, S.O. 2001, c.25, SECTION 6  
 THE LAND IS EXPROPRIATED BY FILING THIS PLAN IN ACCORDANCE WITH THE EXPROPRIATIONS ACT, R.S.O. 1990, c.E.26, SECTION 9 AS AMENDED  
 BY-LAW No. \_\_\_\_\_ OF THE CORPORATION OF THE MUNICIPALITY OF MISSISSIPPI MILLS WAS PASSED ON THE \_\_\_\_\_ DAY OF \_\_\_\_\_, 20\_\_\_\_

DATED AT THE MUNICIPALITY OF MISSISSIPPI MILLS THIS \_\_\_\_\_ DAY OF \_\_\_\_\_, 20\_\_\_\_

KEN T. KELLY - CHIEF ADMINISTRATIVE OFFICER  
 I HAVE THE AUTHORITY TO BIND THE CORPORATION OF THE MUNICIPALITY OF MISSISSIPPI MILLS

**SURVEYOR'S CERTIFICATE**

I CERTIFY THAT:  
 (1) THIS SURVEY AND PLAN ARE CORRECT AND IN ACCORDANCE WITH THE SURVEYS ACT, THE SURVEYORS ACT AND THE LAND TITLES ACT AND THE REGULATIONS MADE UNDER THEM.  
 (2) THE SURVEY WAS COMPLETED ON THE 18th DAY OF SEPTEMBER, 2020

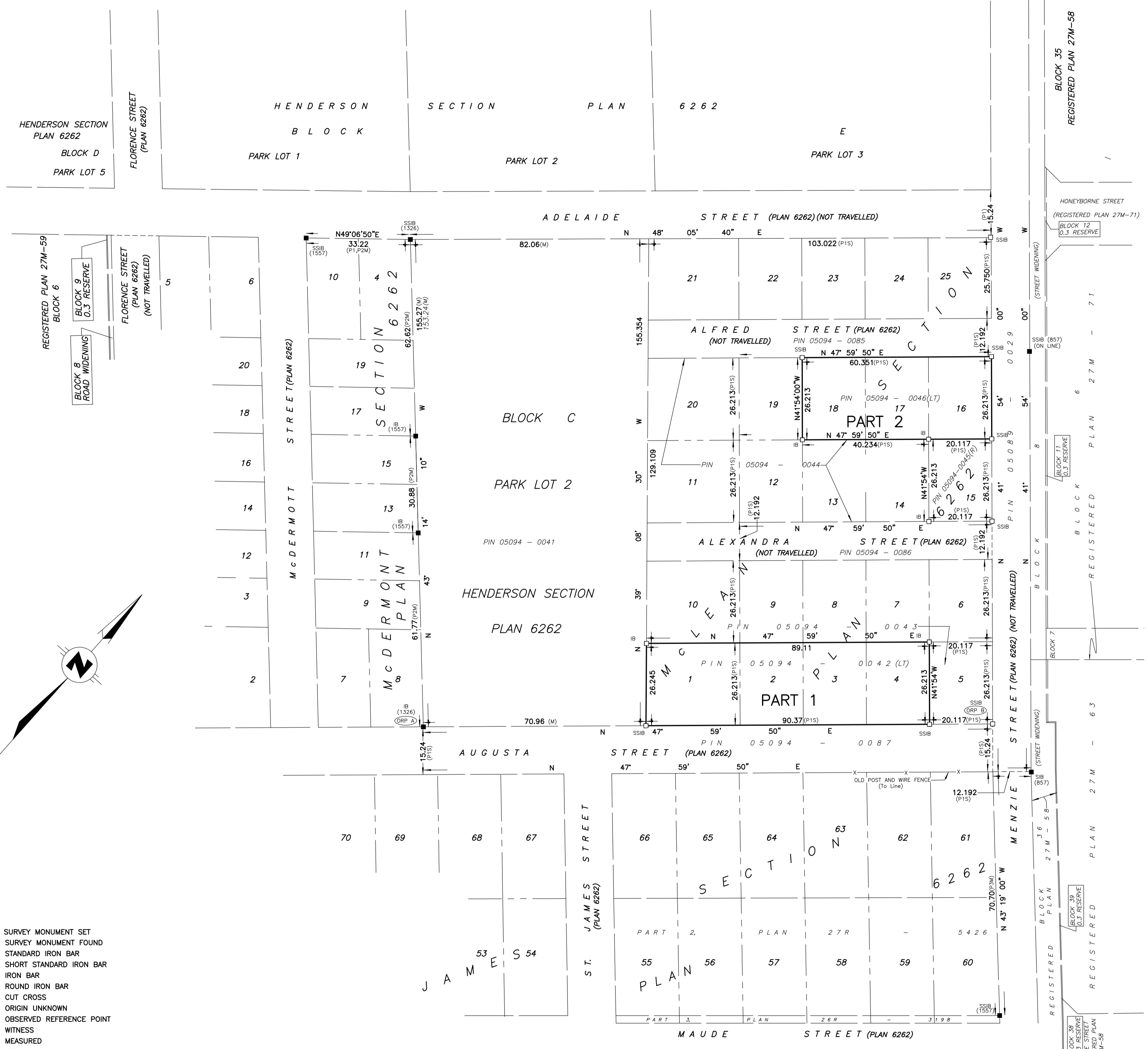
DECEMBER 3, 2020  
 DATE  
 G.A. SMITH  
 ONTARIO LAND SURVEYOR

**METRIC:** DISTANCES AND COORDINATES SHOWN ON THIS PLAN ARE IN METRES AND CAN BE CONVERTED TO FEET BY DIVIDING BY 0.3048  
 O:\jba\1 JOBS CALLON DIETZ\2020\20-0747 Mississippi Mills\Drawing\20-0747-B.dwg December 7, 2020

**Callon Dietz** INCORPORATED  
 ONTARIO LAND SURVEYORS  
 CARLETON PLACE LONDON NORTH BAY  
 info@callondietz.com callondietz.com

SURVEY BY: RG DRAWN BY: RW FILE No: 20-0747-B PLAN No: X-2635

ISO 9001 REGISTERED



- LEGEND:**
- DENOTES SURVEY MONUMENT SET
  - SURVEY MONUMENT FOUND
  - SIB STANDARD IRON BAR
  - SSIB SHORT STANDARD IRON BAR
  - IB IRON BAR
  - RIB ROUND IRON BAR
  - CC CUT CROSS
  - OU ORIGIN UNKNOWN
  - ORP OBSERVED REFERENCE POINT
  - WIT WITNESS
  - M MEASURED
  - S SET
  - P1 PLAN 6262
  - P2 SURVEYOR'S REAL PROPERTY BY SURY, ROWE, KASPRZAK LTD DATED JUNE 17, 1991, REFERENCE No.S059-91 (PLAN ON FILE)
  - P3 PLAN 27R-5426
  - 857 FAIRHALL, MOFFATT & WOODLAND LIMITED
  - 1017 CALLON DIETZ INC.
  - 1054 GEORGE W. BRACKEN, O.L.S.
  - 1326 W. ROSS TAGGART, O.L.S.
  - 1557 SURY, ROWE, KASPRZAK LTD.
  - 1600 G.A. SMITH, O.L.S.
- SSIB'S HAVE BEEN SET DUE TO INSUFFICIENT OVERBURDEN

**BEARING NOTE**  
 BEARINGS ARE MTM GRID, DERIVED FROM OBSERVED REFERENCE POINTS A & B, BY REAL TIME NETWORK (RTN) OBSERVATIONS, MTM ZONE 9, CENTRAL MERIDIAN 76°30'00"W, NAD83 (CSRS)(2010)  
 DISTANCES ARE GROUND AND CAN BE CONVERTED TO GRID BY MULTIPLYING BY THE COMBINED SCALE FACTOR OF 0.99989

**INTEGRATION DATA**

OBSERVED REFERENCE POINTS (ORP'S) DERIVED FROM REAL TIME NETWORK OBSERVATIONS (RTN) AND ARE REFERRED TO MTM ZONE 9 NAD83 (CSRS)(2010) COORDINATES COMPLY WITH URBAN ACCURACY PER SEC.14 (2) OF O. REG. 216/10			
POINT ID	NORTHING	EASTING	
ORP A	5010535.24	329072.77	
ORP B	5010656.65	329207.59	

COORDINATES CANNOT, IN THEMSELVES, BE USED TO RE-ESTABLISH CORNERS OR BOUNDARIES SHOWN ON THIS PLAN