

**ACCESSIBILITY ADVISORY COMMITTEE
AGENDA**

Tuesday, June 19, 2018
2:30 p.m.
Council Chambers, Municipal Office

A. APPROVAL OF AGENDA

B. DISCLOSURE OF PECUNIARY INTEREST

C. DELEGATIONS / PRESENTATIONS / TOURS

1. Jonathan Allan, County of Lanark Material to be Distributed
Re: OVRT Consultation

2. Councillor Gillis, Riverwalk Advisory Committee Pages 2-10
Re: Coleman Island Staircase

D. APPROVAL OF MINUTES – dated May 15, 2018 Pages 11-12

E. BUSINESS ARISING OUT OF MINUTES

F. ROUND TABLE

G. REPORTS

H. INFORMATION / CORRESPONDENCE

1. Community Presbyterian Church Page 13
- Request for Sunday Only Handicap Parking Spaces

I. OTHER / NEW BUSINESS

J. MEETING ANNOUNCEMENTS

August 21, 2018 @ 2:30 pm

K. ADJOURNMENT

Riverwalk Advisory Committee

Presentation to
Mississippi Mills
Accessibility
Committee
June 19, 2018



1

Riverwalk Advisory Committee

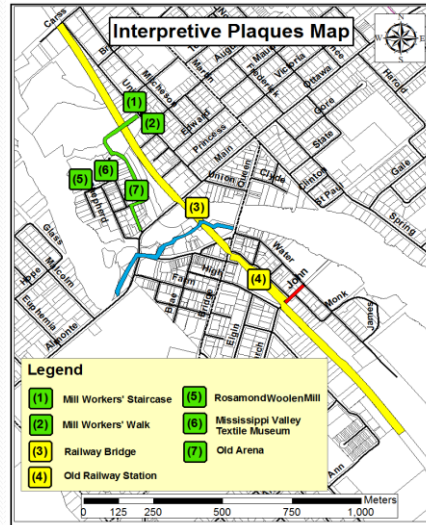
Phase 2
Coleman
Island Trail
Project



2

Coleman Island Extension

- **Coleman Island Trail** - Union St to Main St
- Includes:
 - Mill Workers' Staircase
 - Mill Workers' Walk
 - North Channel Trail on Island
- **OVRT - CPR Trail** (County)
- **Riverwalk Phase One**

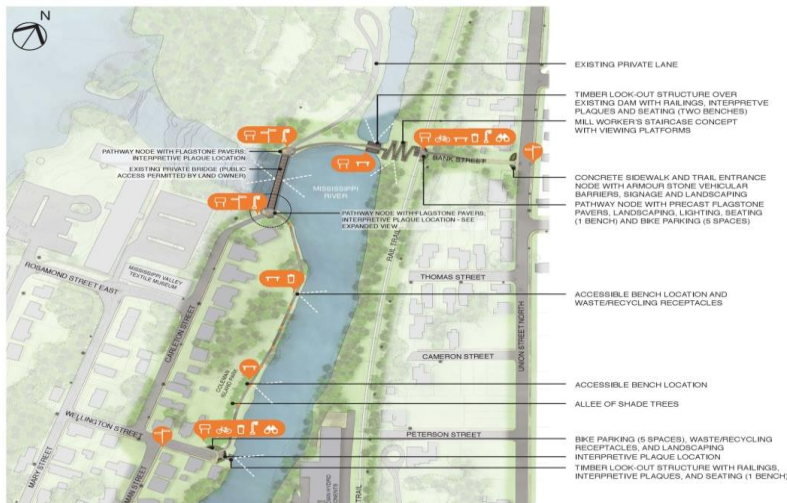


3



ALMONTE MILL WORKER'S WALKWAY CONCEPT

DATE: 06/2017 PROJECT #: 18850-1



Views through Coleman Island Park



North End of Channel Area

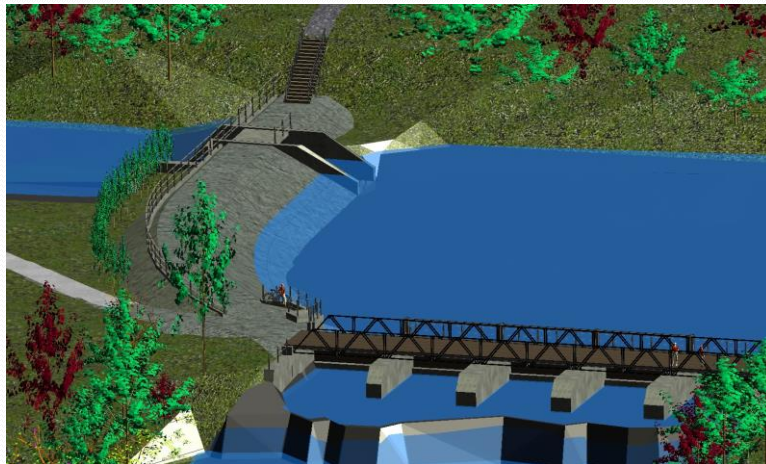


Bridge & Earthen Dam Sites



7

Bridge, Earthen Dam & Staircase



Historic Mill Workers' Walkway & Staircase

- Staircase Picture – Important Heritage

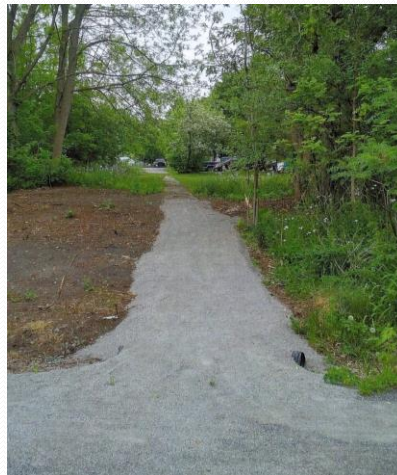


Mill Workers Walkway (aka Bank Street), connecting Union Street to Rosamond Mill on Coleman Island.

9

Mill Workers from Union Street

- Walk is from Union St, near Thomas St, to CPR line
- Collaboration with Mr. Mike Dupuis
- Clean-up completed in the fall, 2015

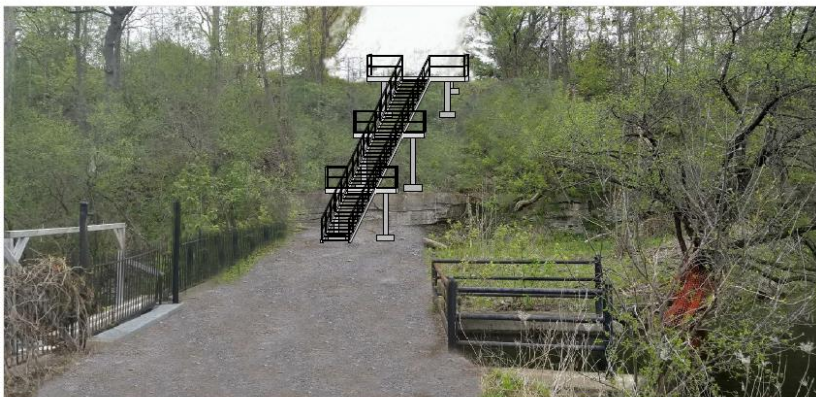


10

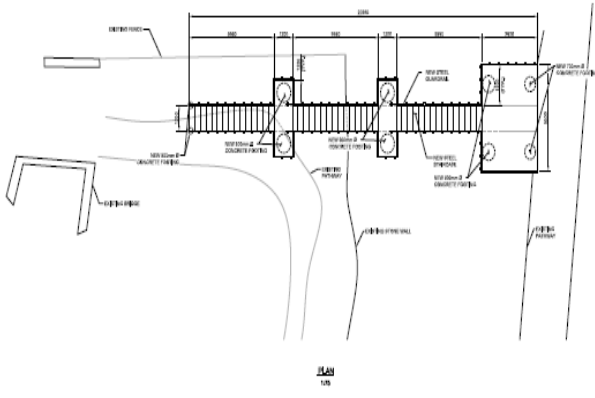
Bank & 3 D Workers' Staircase



Proposed Mill Workers' Staircase



Plan View of Staircase



- Structural Steel
- Steel Plate Sections
- Steel Guardrails
- Concrete Footings
- Upper Landing 3.6 m
- Stair Landings 1.2 m

Approach to Meeting Accessibility

- Minimum effort is not acceptable or adequate in addressing accessibility.
- Accessibility work-arounds, including alternate access routes are acceptable, provided a similar/equitable experience is provided.
- Accessibility signage must be installed at key points.
- Our Table implements this approach.

Compliance Table Coleman Island Extension of Riverwalk (Ontario Regulation 191/11)

<u>Location</u>	<u>Accessible</u>	<u>Accessible By:</u>
Ottawa Valley Recreation Trail (OVRT) Main St to Carss St	Yes (Y)	Completed Compacted Stone Dust Trail with access from Main St or Union St at Bank St
Ottawa Valley Recreation Trail (OVRT) Ann St to Main St	Y if stone dust or paved	County requested to provide compacted stone dust trail - currently planned for 5/8 granular M - TBD
Coleman Island Trail (CIT) Wellington St to Carleton St Bridge end	Y	Specified to be compacted stone dust path with access from Wellington St or Carleton St
Panoramic View from Workers' Heritage Staircase Upper Landing	Y	Access via Workers Walk (concrete sidewalk) from Union St at Bank St & from OVRT
Mississippi River Power Company (MRPC) Lookouts at Bridge and Earthen Dam	Y	Path on earthen dam will be compacted stone dust and bridge will be accessible
View of Workers Heritage Staircase Area	Y	Excellent views available from MRPC's bridge and earthen dam
Workers Historic Staircase	No	Following O. Reg. 191/11, 80.15 exceptions apply: exception 1 - Heritage and exception 6 - not practicable

A meeting of the **Mississippi Mills Accessibility Advisory Committee** was held on **Tuesday, May 15, 2018 at 2:30 p.m.** at the Pakenham Branch Library.

PRESENT:

Committee: Councillor Jill McCubbin, Chair
Myrna Blair
Araina Clark
Jim Lowry
Betty Preston

Staff/Others: Jennifer Russell, Acting Deputy Clerk
Pam Harris, Chief Librarian/CEO (left at 3:30pm)

Regrets: Paul Crozier

Councillor McCubbin called the meeting to order at 2:38 p.m.

A. APPROVAL OF AGENDA

Moved by Betty Preston
Seconded by Myrna Blair
THAT the agenda be accepted as presented.

CARRIED

B. DISCLOSURE OF PECUNIARY INTEREST

None

C. DELEGATIONS / PRESENTATIONS / TOURS

The Chief Librarian/CEO provided a tour of the new library branch and highlighted some of the accessibility features including:

- Accessible entry
- Assisted lift between floors
- Motion lighting
- First floor height adjustable computer desk and chair
- Lower level memory lab computer with large screen and automatic table lift
- Additional spacing between furniture for ease of movement

Member's suggested other accessible items for future consideration:

- Railing and reflective tape for outside steps
- Slow down the timing of the automatic doors
- Signage for lift advising it stops and door opens on every floor
- Doorbell for lift service
- Braille keyboard

D. APPROVAL OF MINUTES

Moved by Myrna Blair
Seconded by Araina Clark
THAT the minutes dated March 20, 2018 be approved as presented.

CARRIED

E. BUSINESS ARISING OUT OF MINUTES

None

F. ROUND TABLE

Araina – pleased that the vegetable gardens at Pakenham School are raised and easy to access.

Betty – asked for update on 5 year plan and any outstanding items; suggested titles in corporate communications should not be in all caps, difficult to read.

Jill - Gemmill Park Grand Opening is taking place on June 16th at 12:00 pm.

G. REPORTS

None

H. INFORMATION / CORRESPONDENCE

1. Lanark County Media Release April 11, 2018 - County Moving Ahead with Trail Improvements

Received.

I. OTHER/NEW BUSINESS

1. National Access Awareness Week – May 27 to June 2, 2018

Members discussed various activities for the week including: daily “accessibility tips” for locations within the Municipality; posters to be displayed in all municipal facilities; use of remaining magnets from last year as giveaways.

J. MEETING ANNOUNCEMENTS

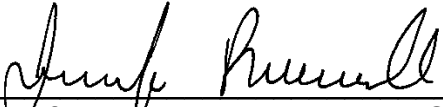
Tuesday, June 19, 2018 at 2:30 p.m.

K. ADJOURNMENT

Moved by Betty Preston
Seconded by Araina Clark
THAT the meeting be adjourned.

CARRIED

The meeting adjourned at 3:59 p.m.



Jennifer Russell, Acting Deputy Clerk

May 28, 2018

Community Presbyterian Church

Box 1073

111 Church Street

Almonte K0A1A0

To the Municipality of Mississippi Mills (Almonte):

Owing to the general ages and abilities of our congregation, The Board of Managers of the Community Presbyterian Church, would like to request a placement of Sunday Only Handicap Parking Spaces in front of our building. We leave the number of them to your discretion.

Hoping this meets with your approval

Barb MacDonald
Chair of the Board of Managers

Community Presbyterian Church
Box 1073
111 Church Street
Almonte, Ont.
K0A 1A0